

SPECIFICATIONS

Antenna-Scanner unit

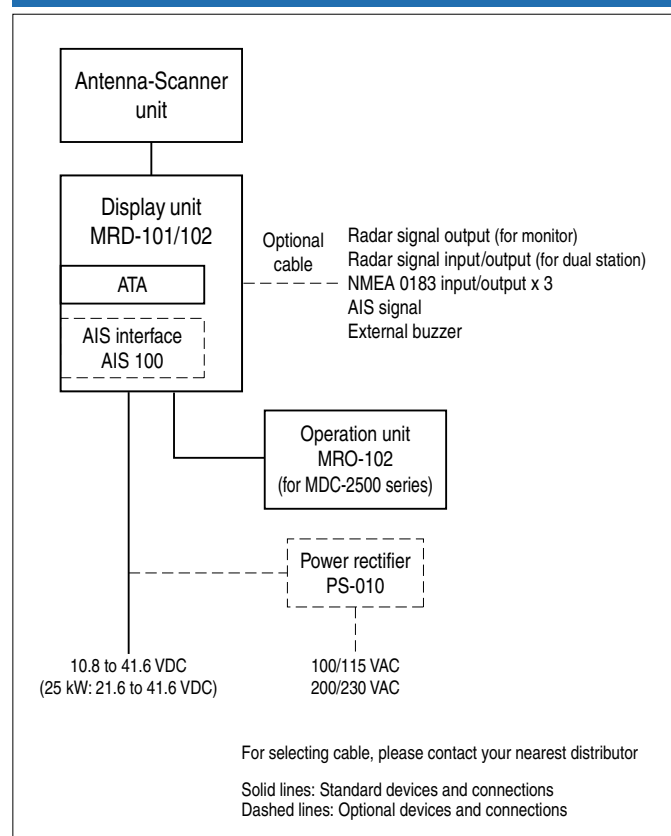
Model	MDC-2240/2540	MDC-2260/2560	MDC-2210/2510	MDC-2220/2520
Antenna length	3 feet	4 feet	4 feet	6 feet
Beam width	Horizontal 2.5°	1.8°	1.8°	1.2°
Vertical	22°	22°	22°	25°
Rotation	24 rpm or 48 rpm			
Peak power output	4 kW	6 kW	12 kW	25 kW

Display unit

Model	MDC-2240/2260/2210/2220	MDC-2540/2560/2510/2520
Display size/type	12.1" color LCD	15" color LCD
Effective diameter	184 mm	228 mm
Resolution	1024 x 768 pixels	
Display color	Green/Yellow/Multi/White	
Off-centering	Max. 66%	
Echo area	2 types (Full screen, Inside of effective diameter)	
Range data accuracy	8 meters or 1% of the range scale selected, whichever is the greater	
Range scales	0.125, 0.25, 0.5, 0.75, 1, 1.5, 2, 3, 4, 6, 8, 12, 16, 24, 32, 36, 48, 72, 96 nm 4 kW: up to 48 nm, 6 kW/12 kW: up to 72 nm, 25 kW: up to 96 nm	
Presentation modes	Head-up, North-up*, Course-up*, True motion*	
Other functions	Day/Night mode, VRM 2 marks, EBL 2 lines, Parallel cursor, Alarms, Trail*, Past course*, Interference rejection, Mark*, Route*, Zoom, Dual station, Monitor output, External buzzer	
NMEA input/output	3 CH	
Power supply	10.8 to 41.6 VDC (25 kW: 21.6 to 41.6 VDC)	
AIS interface	100 Targets* (Option)	
ATA	50 Targets*	
Map overlay	C-Map NT+ / NT MAX (Owner supplied)	
Operating temperature	-15°C to +55°C	

* Requires heading, speed, and/or position signal input from external equipment including GPS Compass depending on application of user.

CONNECTIONS



EQUIPMENT LIST

Standard Equipment

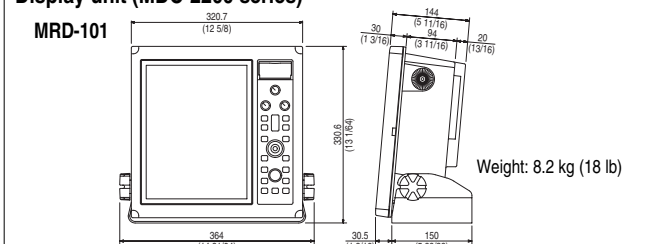
Antenna Scanner	Antenna	RW701A-03	3 feet
		RW701A-04	4 feet
		RW701A-06	6 feet
		RW701B-09	9 feet
	Scanner	RB716A	4 kW
		RB717A	6 kW
		RB718A	12 kW
		RB719A	25 kW
Display unit	MRD-101	For MDC-2200 series	
	MRD-102	For MDC-2500 series	
Operation unit	MRO-102	For MDC-2500 series	
Connecting cable	242J159098B	15 m with connectors on both ends	
DC power cable	CW-259-2M		
Operation manual, Installation material, Spare parts kit			

Option

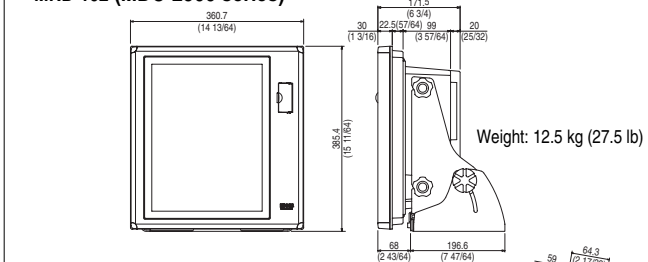
AIS interface, Power rectifier, AC power cable, Gyro-Log interface
Connecting cable (20 m / 30 m), Connecting cable for external monitor

DIMENSIONS AND WEIGHT

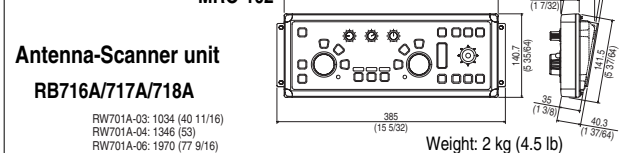
Display unit (MDC-2200 series)



MRD-102 (MDC-2500 series)

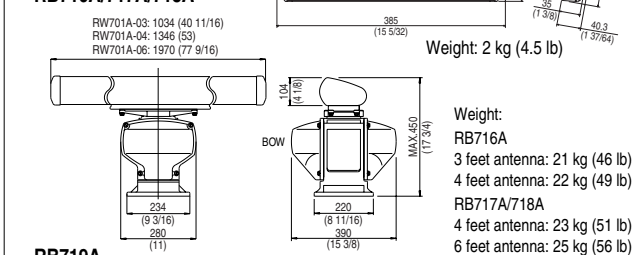


MRO-102

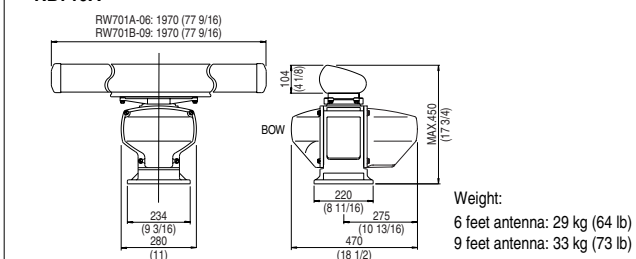


Antenna-Scanner unit

RB716A/717A/718A



RB719A



• Design and specifications are subject to change without notice.



Safety precaution To ensure proper and safe use of the equipment, please carefully read and follow the instructions in the Operation Manual.

For details, please contact:



High-end Radar series forming a class apart!

MDC-2200/2500 series are high performance and multi-function Radars with the essence of Koden's latest technology.

In all phases including accuracy, stability, and reliability, the series achieve the highest-grade in the market.

Wide Variation

Offered with two display sizes, a 12-inch display with operation panel housed in a single compact case and a convenient two piece 15-inch unit with separate keyboard for multiple installation locations. Both units have high-resolution XGA (1024 x 768) grade LCD, which is extraordinary for the 12-inch LCD display.

Also you can select the Antenna-Scanner Unit from a wide variety of output powers and lengths to best fit your application or site circumstances.

● 12-inch (The highest resolution of the class)

MDC-2240: 4 kW, 3 feet/4 feet Open

MDC-2260: 6 kW, 4 feet/6 feet Open

MDC-2210: 12 kW, 4 feet/6 feet Open

MDC-2220: 25 kW, 6 feet/9 feet Open

● 15-inch

MDC-2540: 4 kW, 3 feet/4 feet Open

MDC-2560: 6 kW, 4 feet/6 feet Open

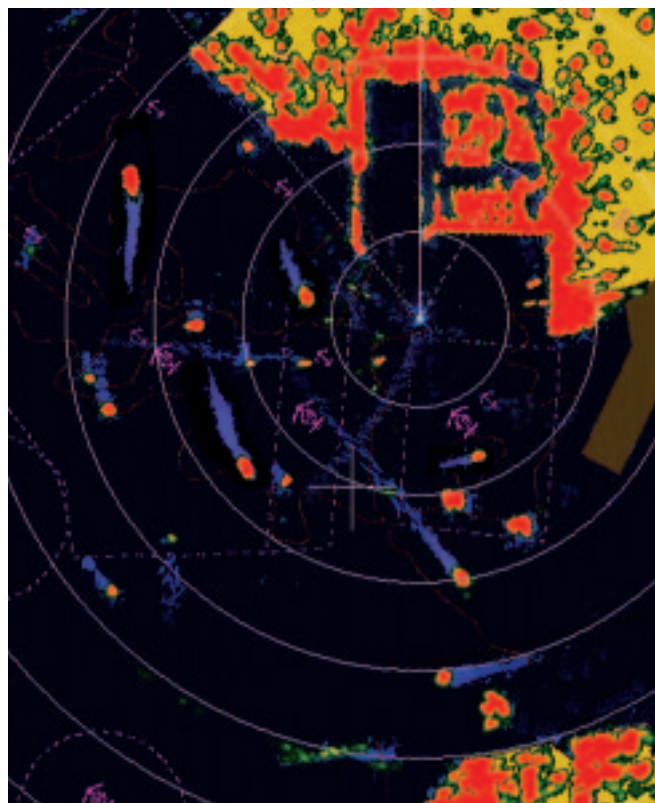
MDC-2510: 12 kW, 4 feet/6 feet Open

MDC-2520: 25 kW, 6 feet/9 feet Open

True trail function

The display shows exact movement of other vessels like drawing tails, while land and buoys are shown as stationary objects even while your vessel is moving.

This makes it easy for you to distinguish moving from stationary objects.

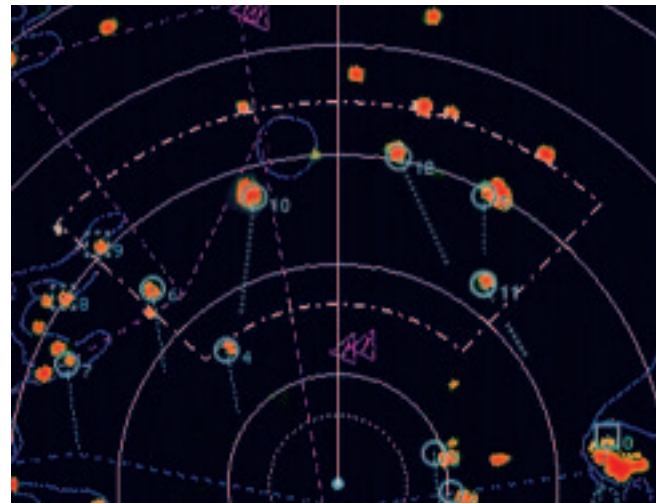


ATA with up to 50 targets as standard

The convenient ATA (Automatic Tracking Aid) function comes as standard.

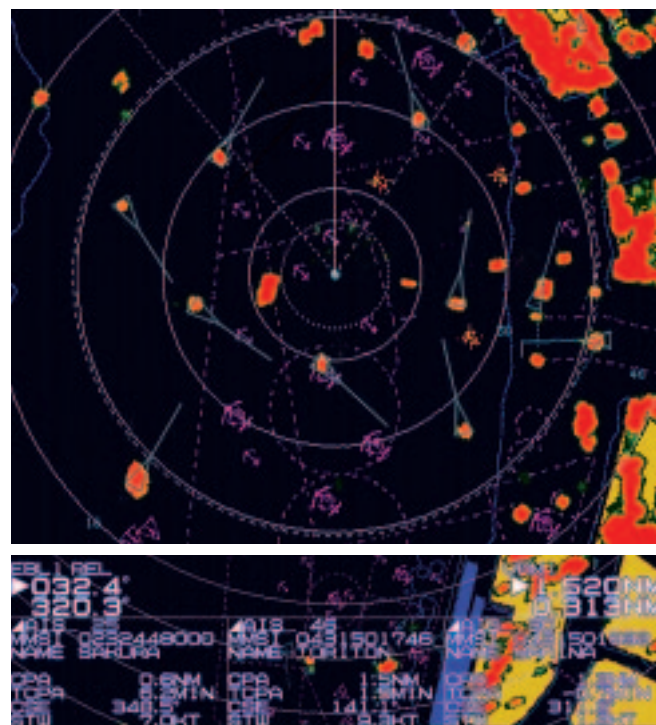
The latest movements of other vessels can be shown instantaneously in vector form and numeric form, ensuring safe navigation.

If the automatic acquisition zone is set, the targets up to 50 entering the zone will be locked automatically.



AIS interface up to 100 targets as option

When connected with an AIS receiver, the radar displays information on up to 100 targets including the vessel name, heading, and speed of each vessel with an AIS transmitter mounted.



Map Overlay with C-Map chart (NT+ or NT MAX) as standard function

C-Map chart (NT+ or NT MAX)** is overlaid on the radar screen to provide clear radar pictures of coastlines, buoys, and other features.

Even in Head-up mode, the chart follows smoothly in accordance with change of the heading of vessel.

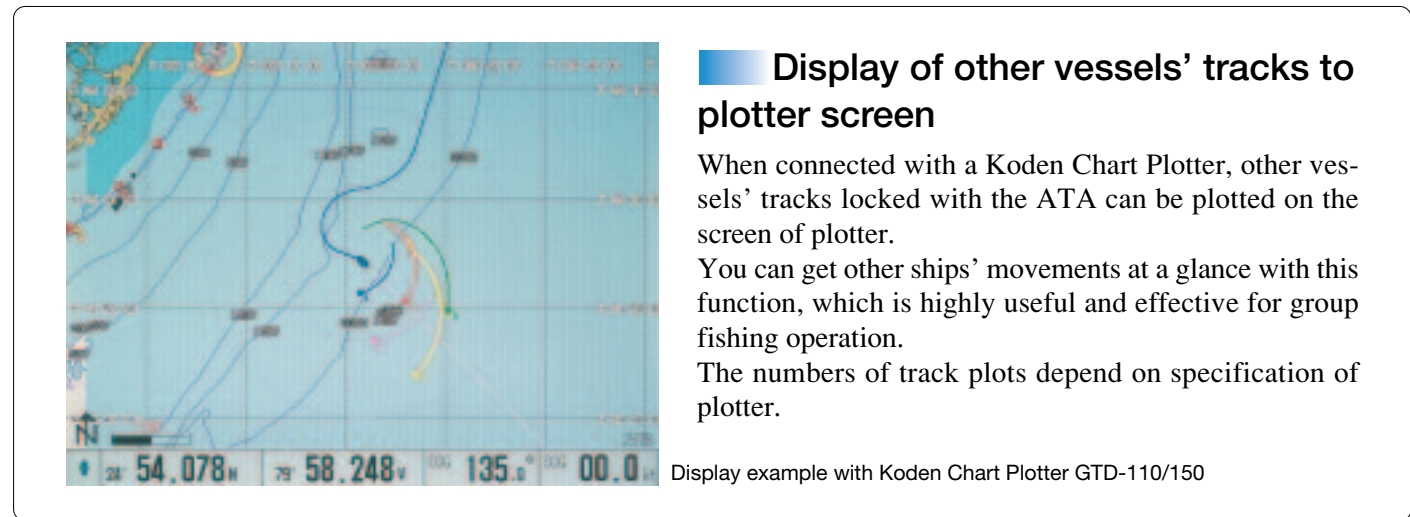
Furthermore, waypoints, buoys, and hazardous targets can be overlaid for safer navigation.

C-Map NT MAX "World Wide" background chart is built-in as standard.

** Basic chart information only. Extra features of C-Map such as photo indication are not available.

Dual Station

One antenna can be operated from two displays. This is highly effective for navigation of a double ended vessel with bridges in the bow and stern.



Display of other vessels' tracks to plotter screen

When connected with a Koden Chart Plotter, other vessels' tracks locked with the ATA can be plotted on the screen of plotter.

You can get other ships' movements at a glance with this function, which is highly useful and effective for group fishing operation.

The numbers of track plots depend on specification of plotter.

Display example with Koden Chart Plotter GTD-110/150